

MV10NRSP-HL Series HIGH LIFT SCISSOR HAND PALLET TRUCKS 1.0 tonne

REDUCE OPERATOR STRAIN AND BOOST PRODUCTIVITY

The manual scissor pallet truck is ideal for moving and lifting pallets and for raising open pallets. The high lifter can be used as a standard pallet truck and lifting table.

SPECIFICATIONS

MV10NRSP-HL



WHEN
RELIABILITY IS
EVERYTHING...

MV10NRSP-HL Series 1.0T HIGH LIFT SCISSOR HAND PALLET TRUCKS

Its scissor mechanism is what makes this high lift pallet truck unique and practical. It ensures efficient handling, reducing the need for repetitive bending and minimising operator strain. Ideal for tasks such as loading, unloading, or working on production lines where precise positioning of materials is essential.

Pallets up to 1000kg can be lifted easily and safely to an ergonomic and comfortable height for load transfer, or to function as a height-adjustable worktable with a height of up to 800mm. The support scissor mechanism's legs touch the floor from a lifting height of 400 mm for extra stability.

Key Features:

- Extra high, up to 800mm
- Manual lift to 1000kg
- Can be used as a pallet truck and lifting table
- Working at an ergonomic and optimal working height
- Extra stability due to the support legs
- Equipped with a stable base and robust wheels for easy movement
- Tandem fork rollers
- Built to withstand demanding industrial environments, ensuring longevity
- Standard equipped with polyurethane (PU) steering wheels and fork rollers
- 2-year warranty excludes general wear and tear, damage and misuse/overloading

PRODUCT FEATURES

- # 1 800 mm maximum lift for ergonomic usage
- # 2 Smooth controls equally suitable for both left-handed and right-handed operators.
- # 3 Standard hydraulic lift system
- # 4 Equipped with polyurethane wheels as standard
- # 5 Extra stability due to support legs

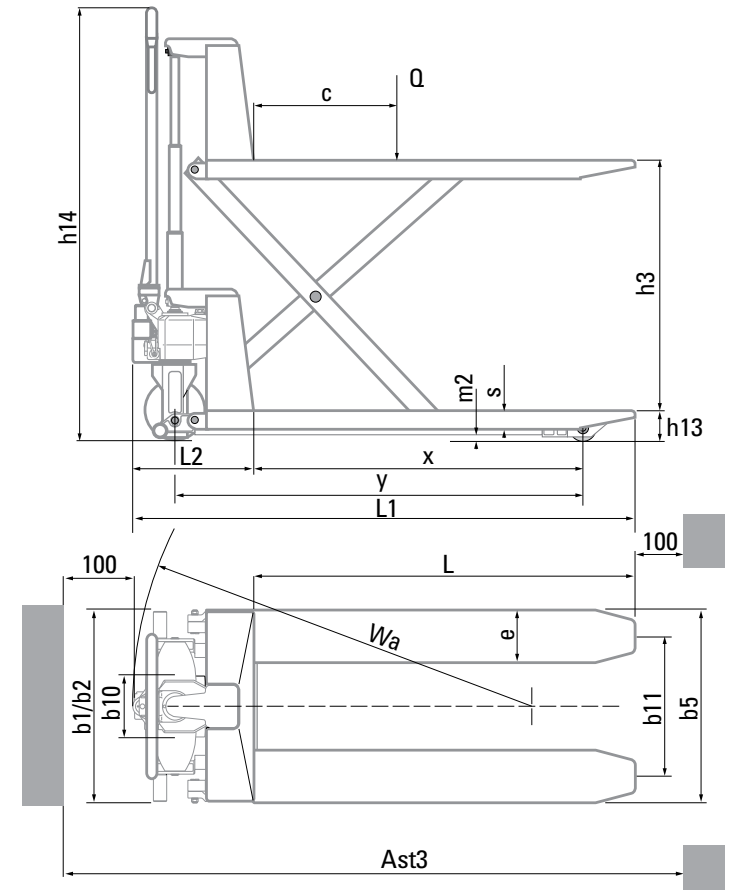


VDI - PERFORMANCE & DIMENSIONS

CHARACTERISTICS			
1.1	Manufacturer		Mitsubishi Forklift Trucks
1.2	Manufacturer's model designation		MV20NPTP-LP
1.3	Power source		Manual
1.4	Operator type		Pedestrian
1.5	Load capacity	Q (kg)	1000
1.6	Load center distance	c (mm)	600
1.8	Load wheels axle to fork face (forks lowered)	x (mm)	43
1.9	Wheelbase	y (mm)	1180
WEIGHT			
2.1b	Truck weight without load, with maximum battery weight	kg	115
WHEELS, DRIVE TRAIN			
3.1	Tyres: PT=Power Thane, Vul=Vulkollan, P=Polyurethane, N=Nylon, R=Rubber drive/load side		RSP
3.2	Tyre dimensions, drive side	(mm)	160
3.3	Tyre dimensions, load side	(mm)	80
3.5	Number of wheels, load/drive side (x=driven)		2/2
3.6	Track width (center of tyres), drive side	b10 (mm)	120
3.7	Track width (center of tyres), load side	b11 (mm)	380
DIMENSIONS			
4.4	Lift height	h3 (mm)	715
4.9	Height of tiller arm / steering console (min./max.)	h14 (mm)	Min680/Max1240
4.15	Fork height, fully lowered	h13 (mm)	85
4.19	Overall length	l1 (mm)	1545
4.20	Length to fork face	l2 (mm)	1150
4.21	Overall width	b1/b2 (mm)	550
4.22	Fork dimensions (thickness, width, length)	s / e / l (mm)	50, 160 and 1150
4.25	Outside width over forks (minimum / maximum)	b5 (mm)	550
4.32	Ground clearance at centre of wheelbase (forks lowered)	m2 (mm)	85
4.33b	Working aisle width (Ast3) with 1000 x 1200 mm pallets, load crosswise	Ast3 (mm)	2350
4.34b	Working aisle width (Ast3) with 800 x 1200 mm pallets, load lengthwise	Ast3 (mm)	N/A
4.35	Turning radius	Wa (mm)	1380

MV10NRSP-HL Series

1.0T HIGH LIFT SCISSOR HAND PALLET TRUCKS



WHEN RELIABILITY IS EVERYTHING...



Like any products bearing "MITSUBISHI" on its product name our materials handling equipment benefits from the tremendous heritage, huge resources and cutting-edge technology of one of the world's largest corporations – Mitsubishi Heavy Industries Group.

Engineering spacecraft, jet planes, power plants and more, MHI specialises in those technologies where performance, dependability and superiority decide your success or failure...

So when we promise you quality, reliability and value for money, you know it's a guarantee we have the power to deliver.

That's why every model in our award-winning and comprehensive range of lift trucks and warehouse equipment is built to a high specification – to ensure it keeps working for you. Day after day. Year after year. Whatever the job. Whatever the conditions.

YOU'LL NEVER WORK ALONE

As your local authorised dealer, we are here to keep your trucks working – through our extensive experience, our technical excellence and our commitment to customer care.

We are your local experts, backed by efficient channels to the entire organisation of Mitsubishi Forklift Trucks.

No matter where you are, we are close by – with the capability to meet your needs.

Discover how Mitsubishi Forklift Trucks give you more from your local authorised dealer or when you visit our website www.mitforklift.com

Specifications are indicative and may vary depending on operating conditions. Failure to assess all factors may result in performance deviations. All relevant sales support materials and technical expertise of the official distributor must be considered when identifying the best product/solution. Options and technical details may change without notice. Full legal notice and up-to-date product information: www.mitforklift.com.

info@mitforklift.com

(04/26) © 2026 Logisnext Europe B.V. All rights reserved.



Logisnext Europe B.V.
Hospitaaldreef 29 (Floor 13)
1315 RC Almere
The Netherlands
Tel: +31 (0)36 5494 411



mft2.eu/fb



mft2.eu/apps



mft2.eu/youtube



mft2.eu/facebook

